

# PORT FOLIO



---

Mitchell Horn



# HELLO!

I am Mitchell Horn, a versatile creative, encompassing roles as an artist, illustrator, and graphic designer.

My creations resonate with the delightful innocence often intertwined with childhood memories.

My portfolio spans across diverse projects, including commercial ventures like crafting logos and bringing characters to life. I've been an active participant in numerous global group art exhibitions, showcasing my work across countries such as the United States of America, Germany, and Canada.

**LOGO**



Explore my wide-ranging collection of logo designs, thoughtfully crafted to meet the unique needs and visions of various clients.

Top row: Left - Uloo\*. Centre - Wozzi\*. Right - Hope Foundation International\*

Middle row: Left - Zeotrope Narratives. Centre - Ultitude Ultimate. Right - Mint Ultimate

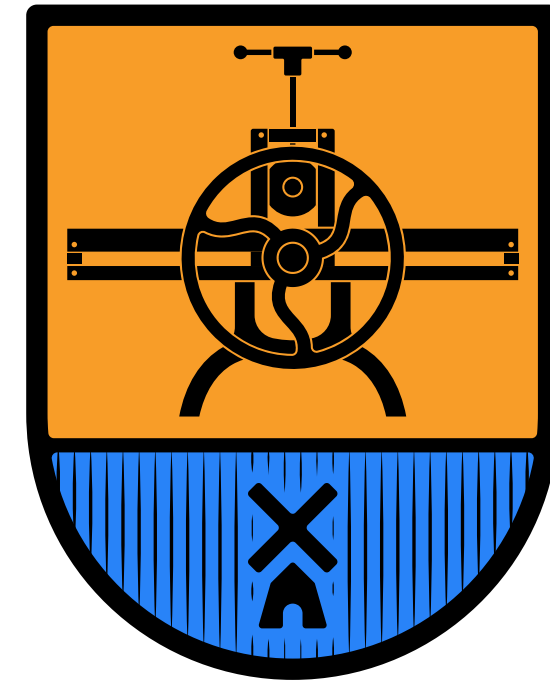
Bottom row: Left - Delserve. Centre - Catch 22 Ultimate. Right - Cape Town Flying Disc Association (CTFDA)



\*Client work created as part of my responsibilities, whilst at The Training Room Online.



**Polymetaal**



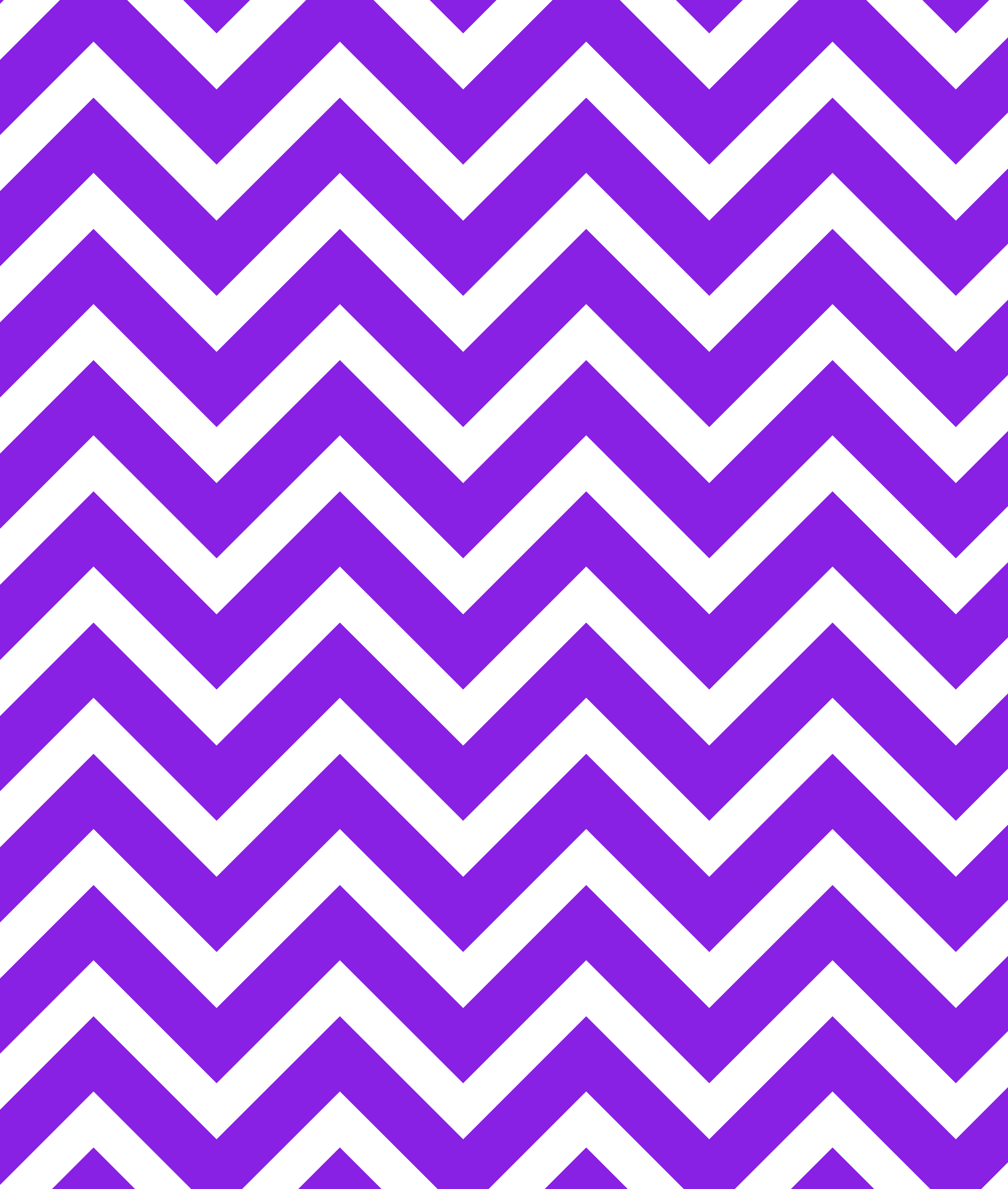
**ATLANTIC  
PADEL**  
EXPERIENCE THE FUN



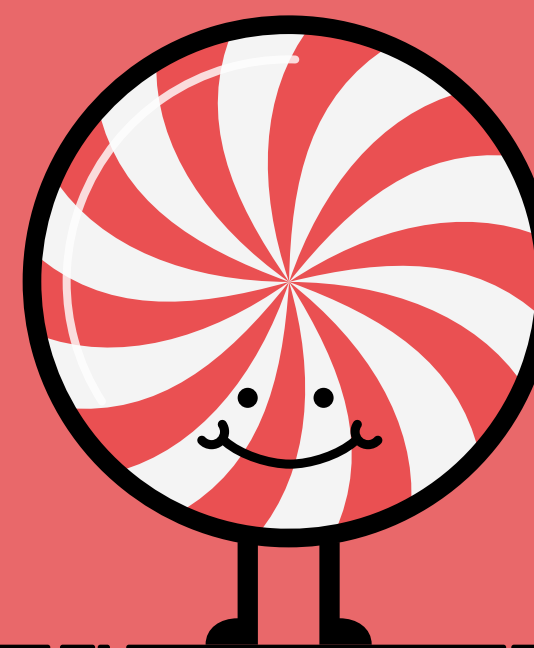
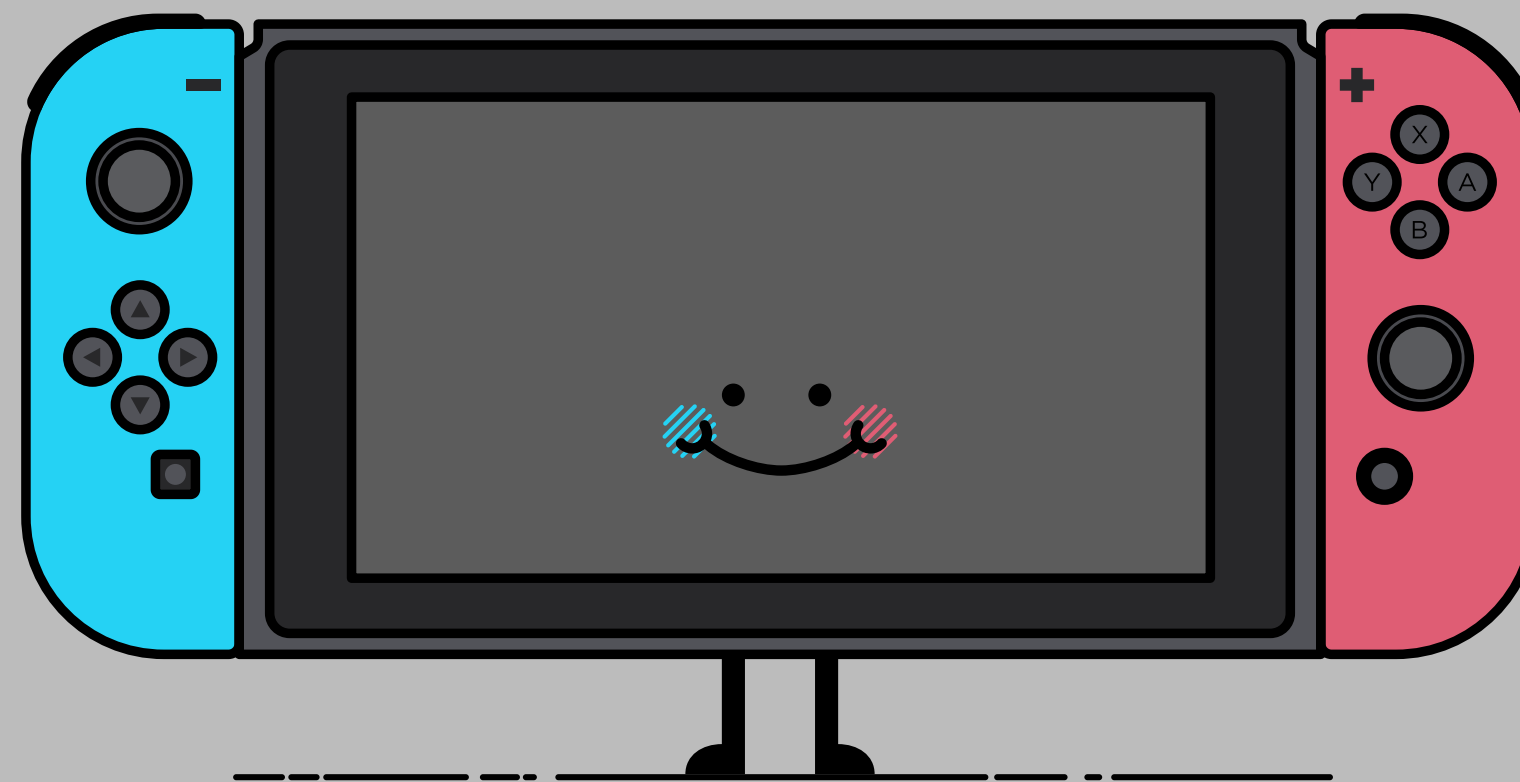
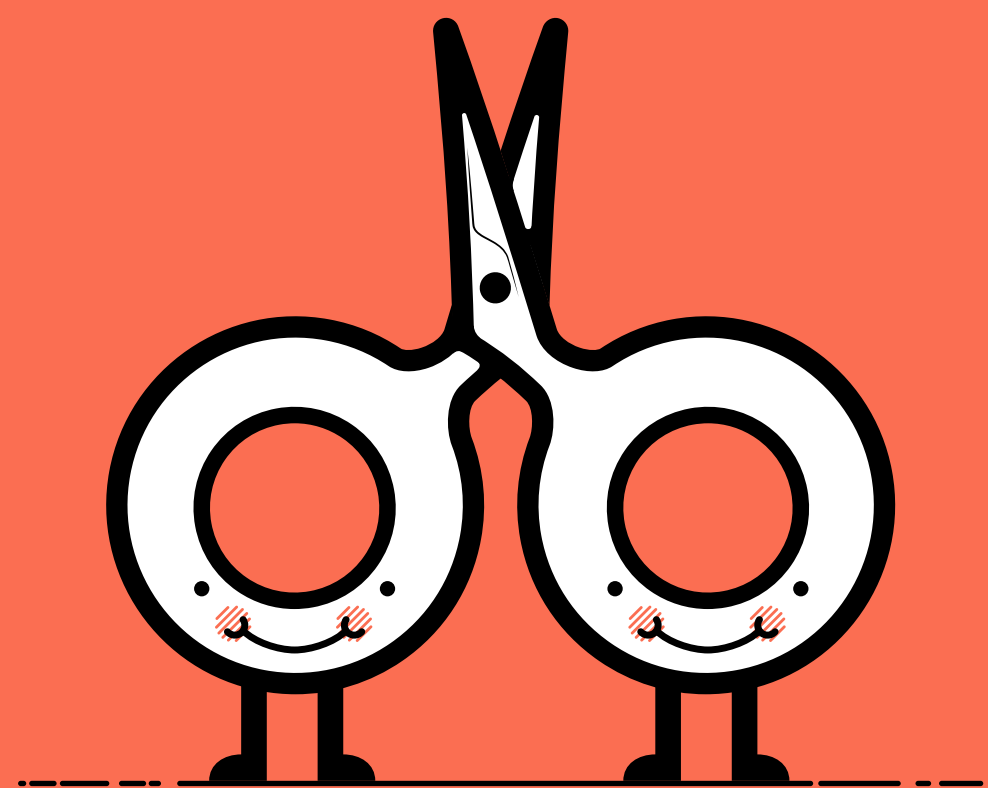
Top row: Left - Caring Hands.  
Centre - Nowrich City FC.  
Right - Uniquely Beautiful Salon

Middle row: Left - Vudu Roots  
Right - Polymetaal.

Bottom row: Left - Loch-Ness.  
Right - Atlantic Padel



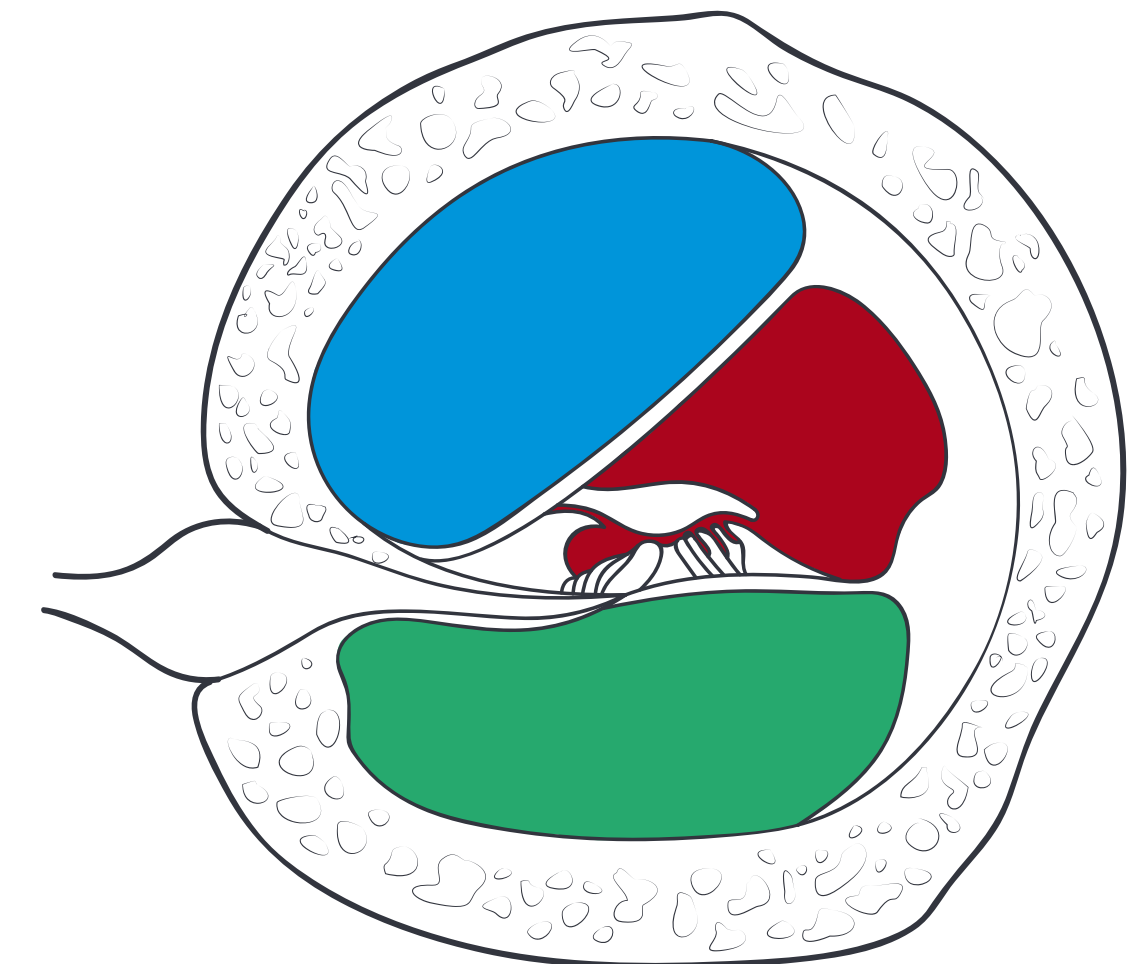
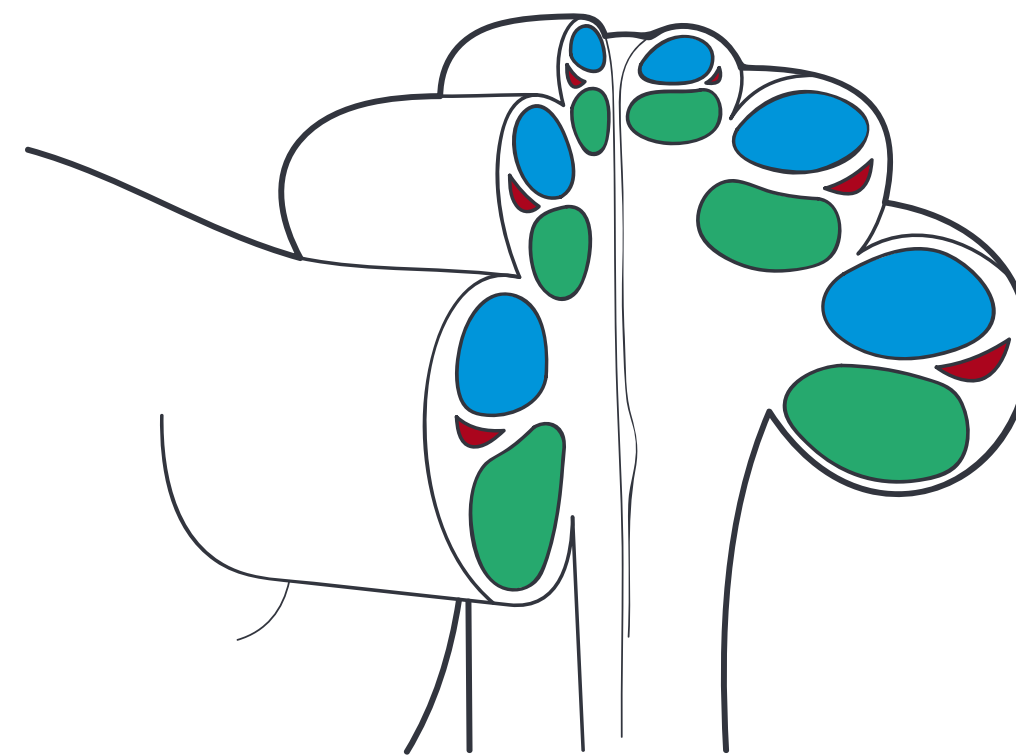
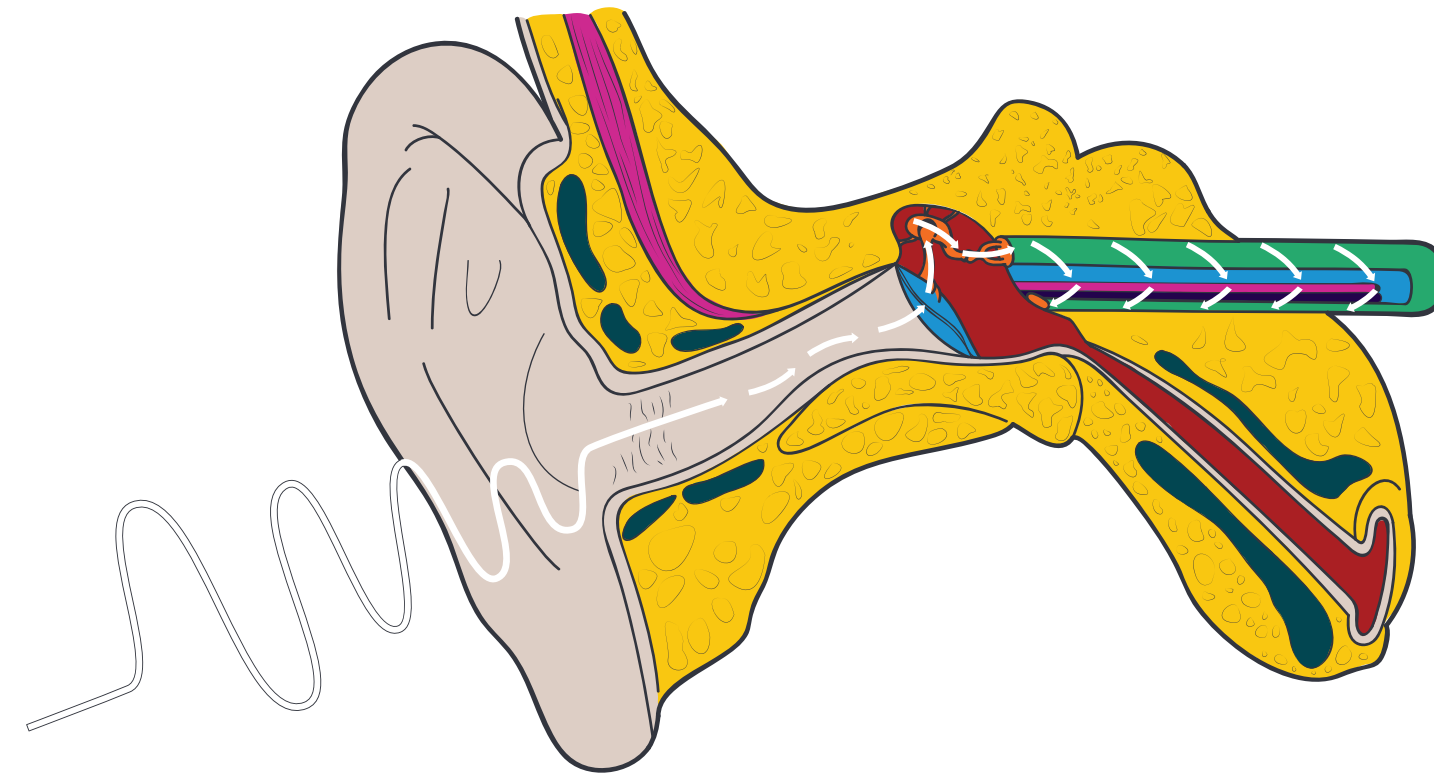
# ILLUSTRATION



Mister characters designs. Inspired by the Mr. Small books, these illustrations bring the joy and nostalgia of childhood into everyday items and sweets.

## EDUPLEX

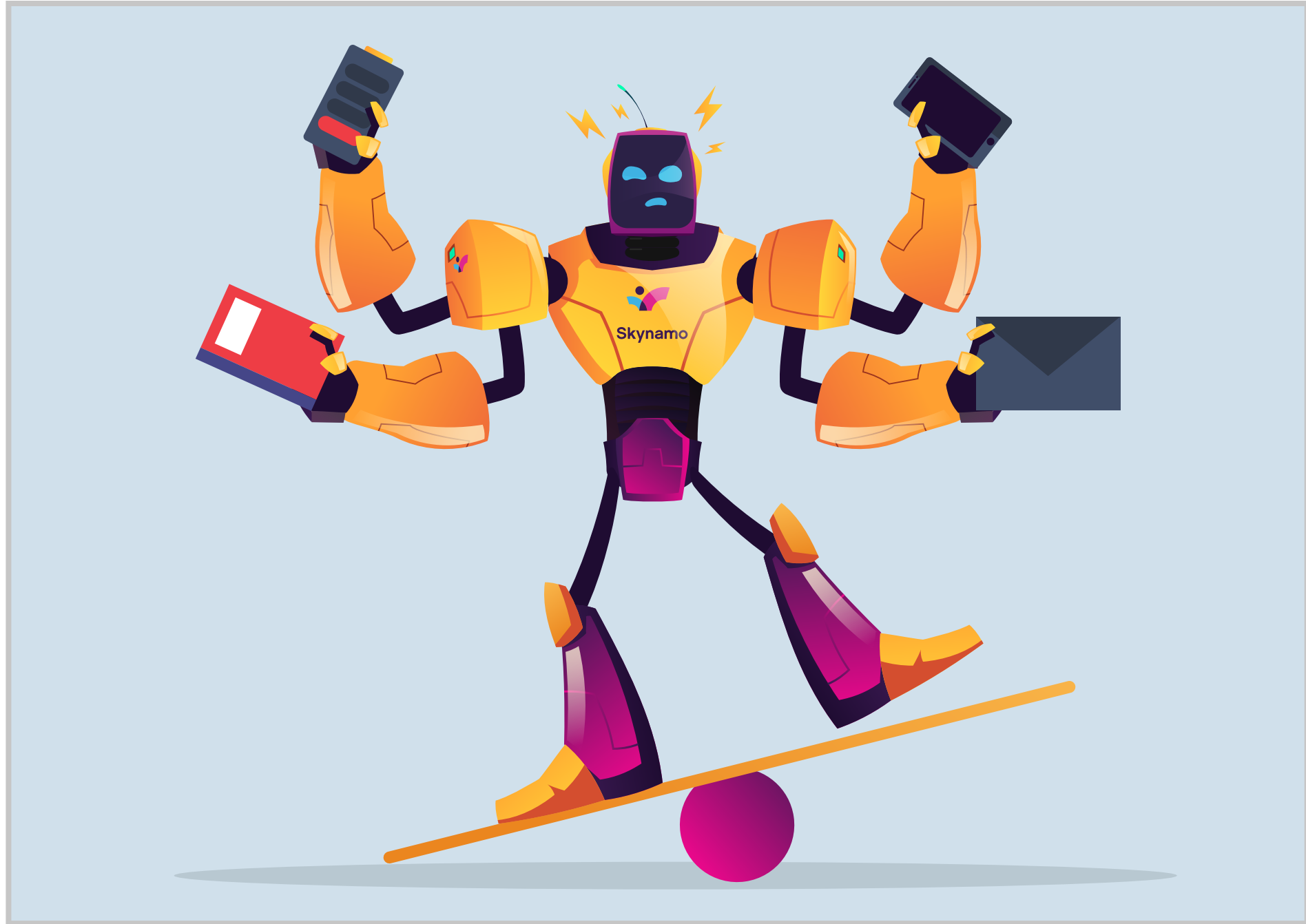
Within the Eduplex HAA learning course, I had the privilege of creating illustrations to support parents whose children are facing hearing impairments.



## PENBEV

I had the privilege of creating captivating characters for the PENBEV RED employee guide, adding a touch of personality to enhance the overall experience.





## SKYNAMO

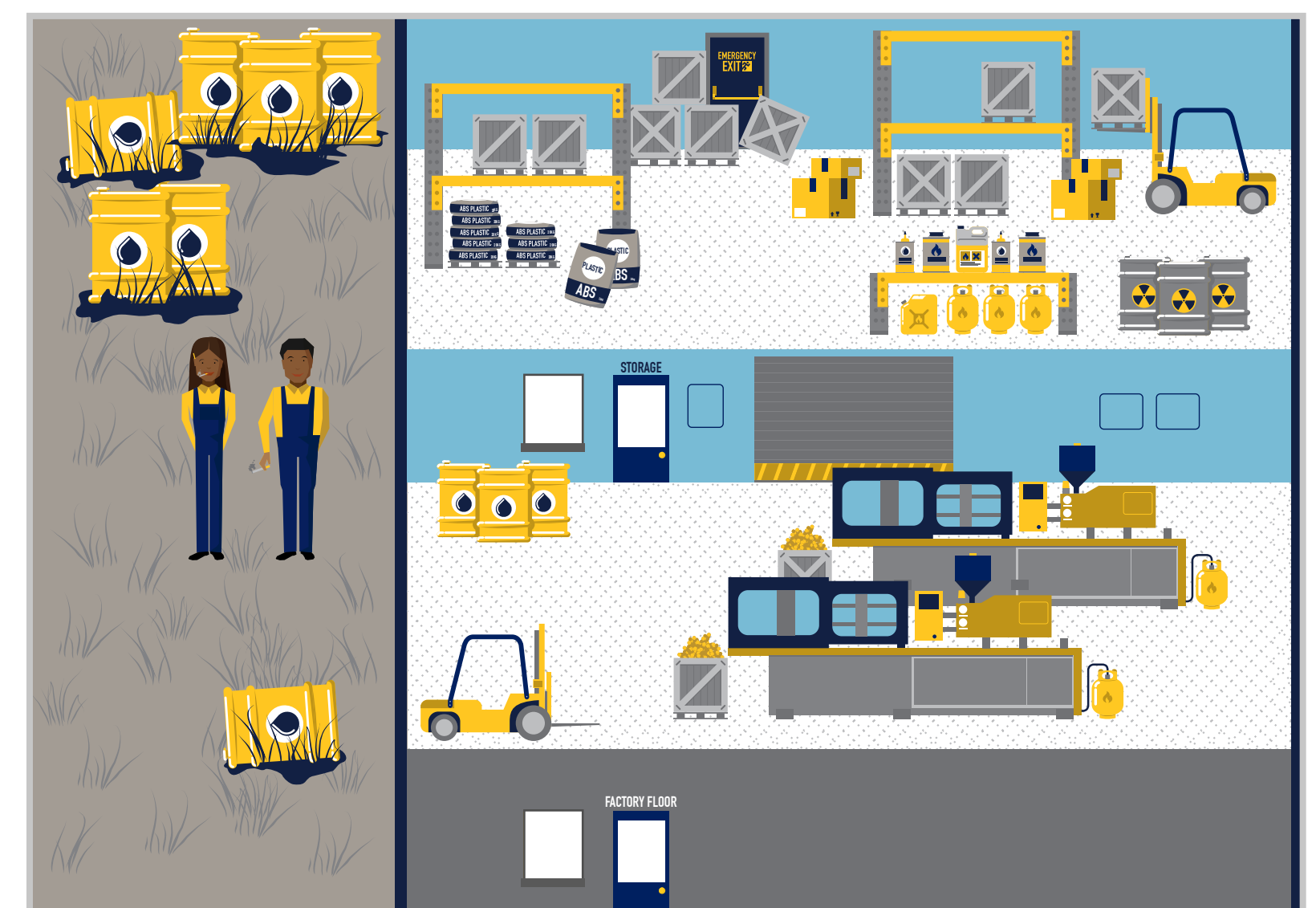
I was tasked by Skynamo to create robot character illustrations that depict the delicate balance between work and life, providing a visually engaging representation of this concept.

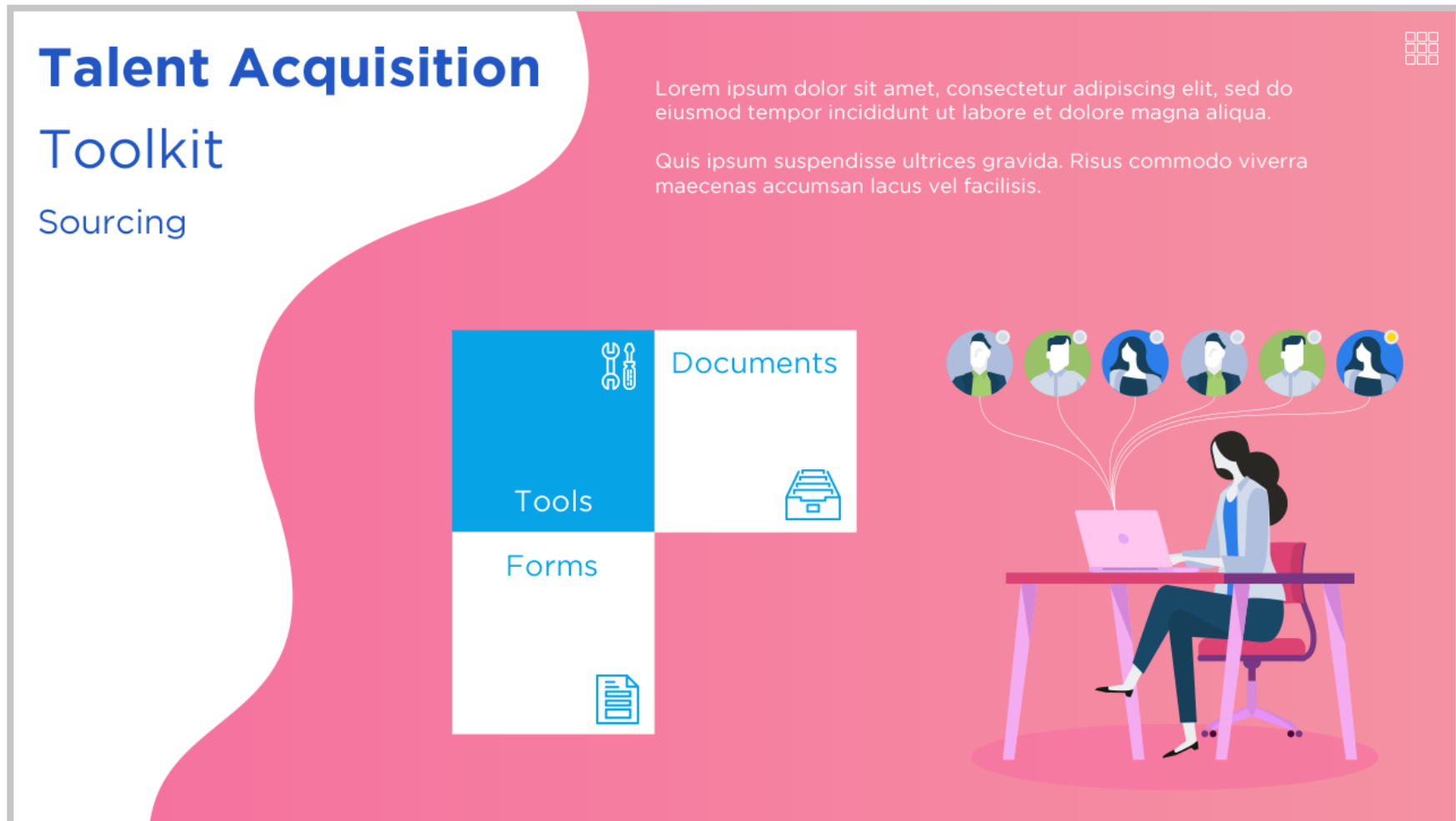


# **DIGITAL LEARNING**

# SANTAM RISK SURVEYOR

I had the opportunity to create a comprehensive suite of illustrations for the Santam Risk Surveyor (SRS) course, spanning various mediums such as e-learning modules, print materials, and animated content. In total, this project involved the creation of more than 200 illustrations, each contributing to the course's effectiveness and visual appeal.





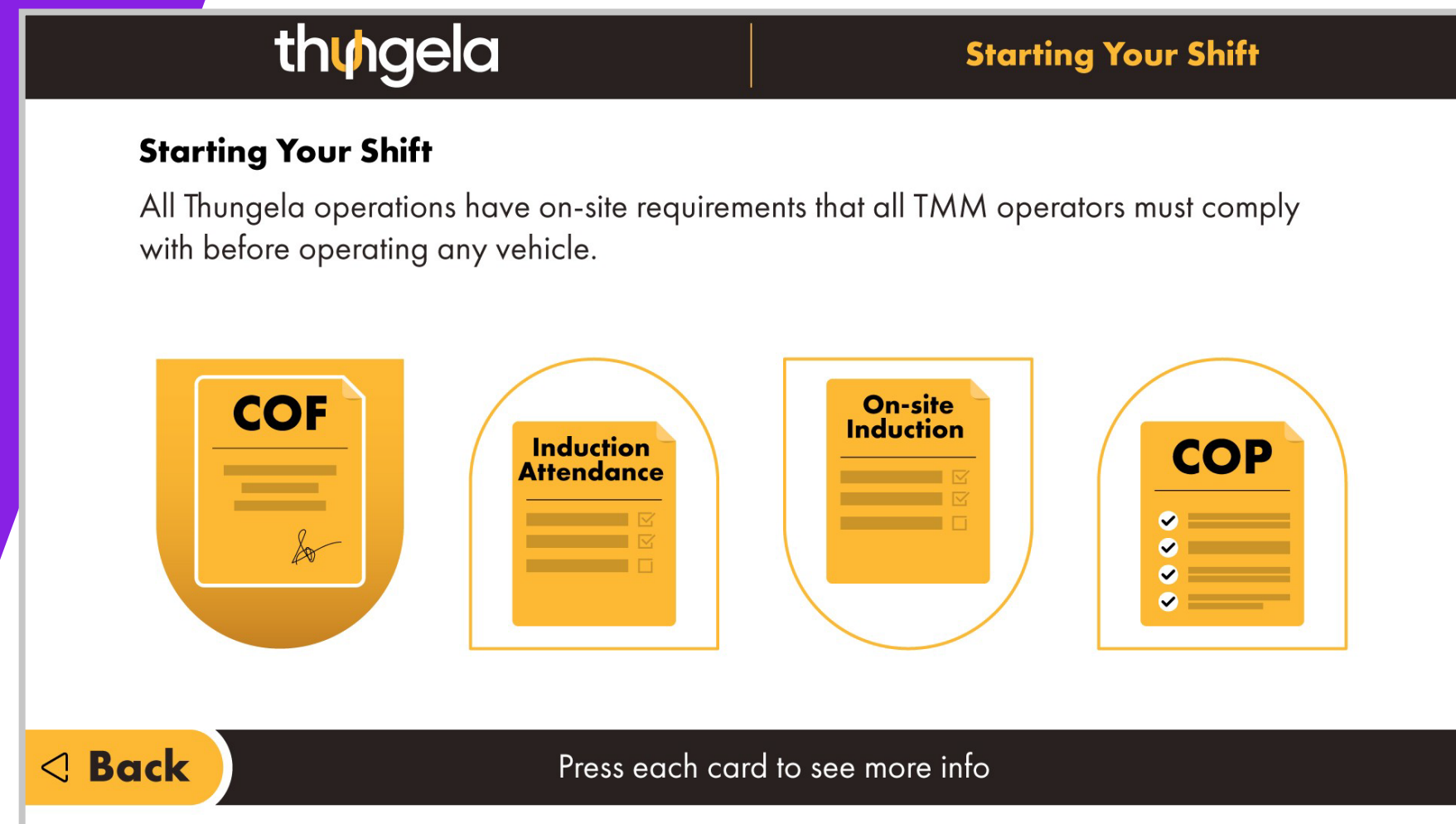
# NASPERS

I designed the user-friendly interface for the Naspers Talent Acquisition Toolkit, enhancing the overall e-learning experience.

# THUNGELA

For the client Thungela, I developed a visually engaging and user-friendly heavy vehicle safety training program.

The design was crafted as a journey, offering a simplified yet compelling experience to keep users fully engaged throughout their learning process.



## Fundamentals in Injectable Dosage Form Development & Manufacturing

hikma.

Start →



HIKMA

I crafted the interface design for Hikma's educational platform, specifically tailored for their "Fundamentals in Injectable Dosage Form" course, ensuring an engaging and effective learning experience.

**hikma.**

Introduction

Drug product components

Liquid injectables

Lyophilized injectables →

Sterile product manufacturing


Glossary

Show narration

Show content

22 / 33

### Materials: rubber



The rubber material used in the manufacturing of rubber stoppers is a mixture of ingredients (elastomer, antioxidant, plasticizer, pigment...). There are 3 major types available in the market:

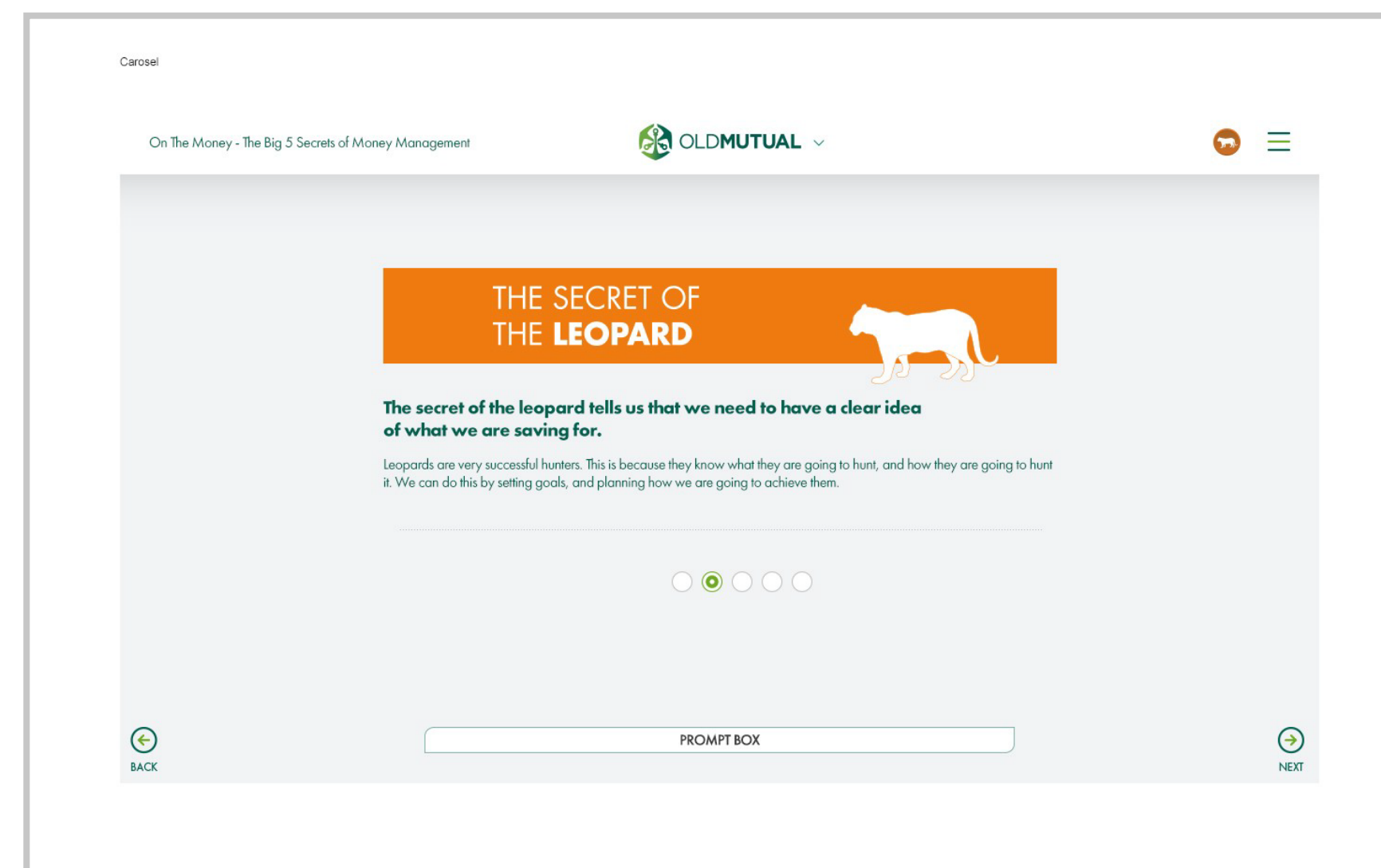
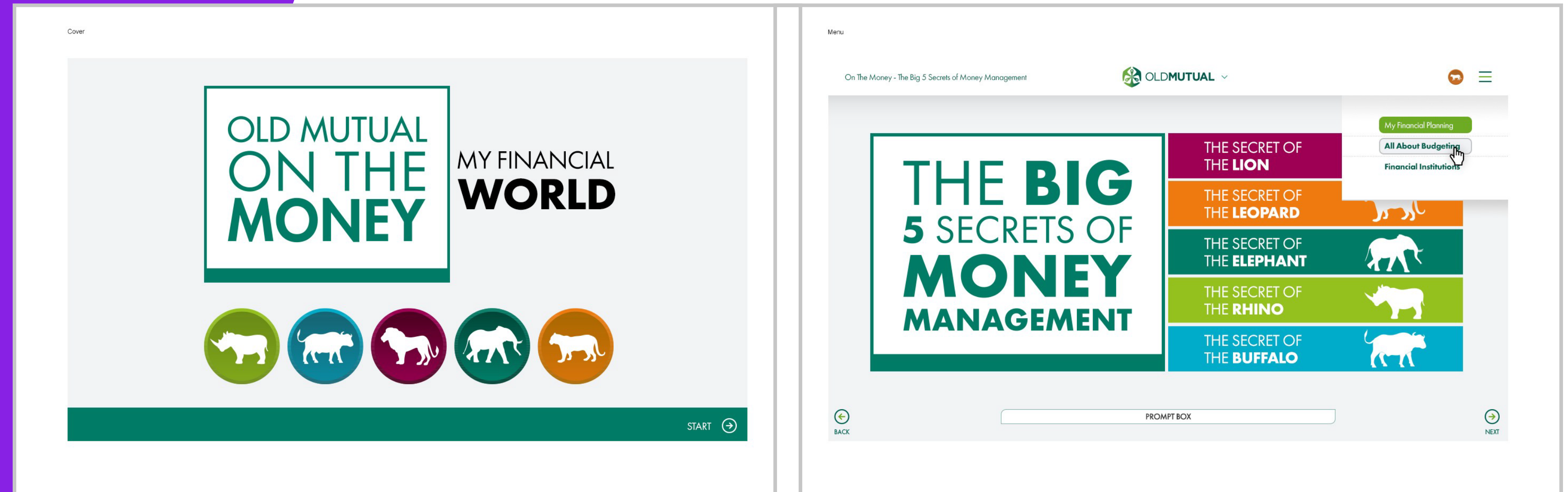
- 1 Bromobutyl stoppers
- 2 Chlorobutyl stoppers: more resistance to pH change
- 3
  - Teflon (PTFE: Polytetrafluoroethylene) stoppers: most inert
  - Bromobutyl stoppers coated with inert material
  - Reduce potential for extractables/leachables

We study the originator product and perform QbD (Quality by Design) to choose the suitable rubber stopper type

Back ←      User prompt here      Next →

# OLD MUTUAL

I designed the e-learning interface for Old Mutual's "Big 5 Secrets of Money Management" financial course, optimizing the user experience for an insightful and engaging educational journey.



**COMICS**



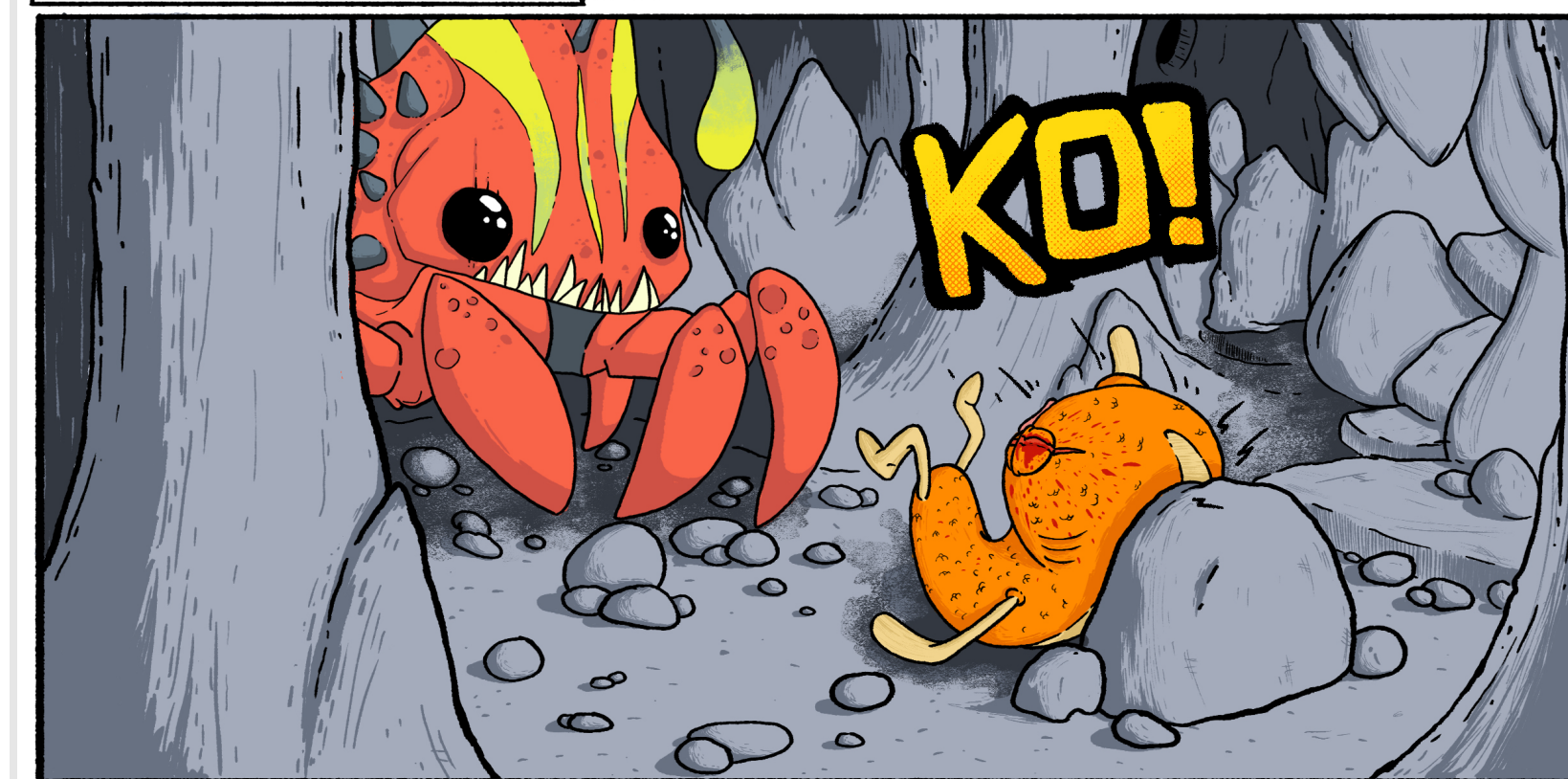
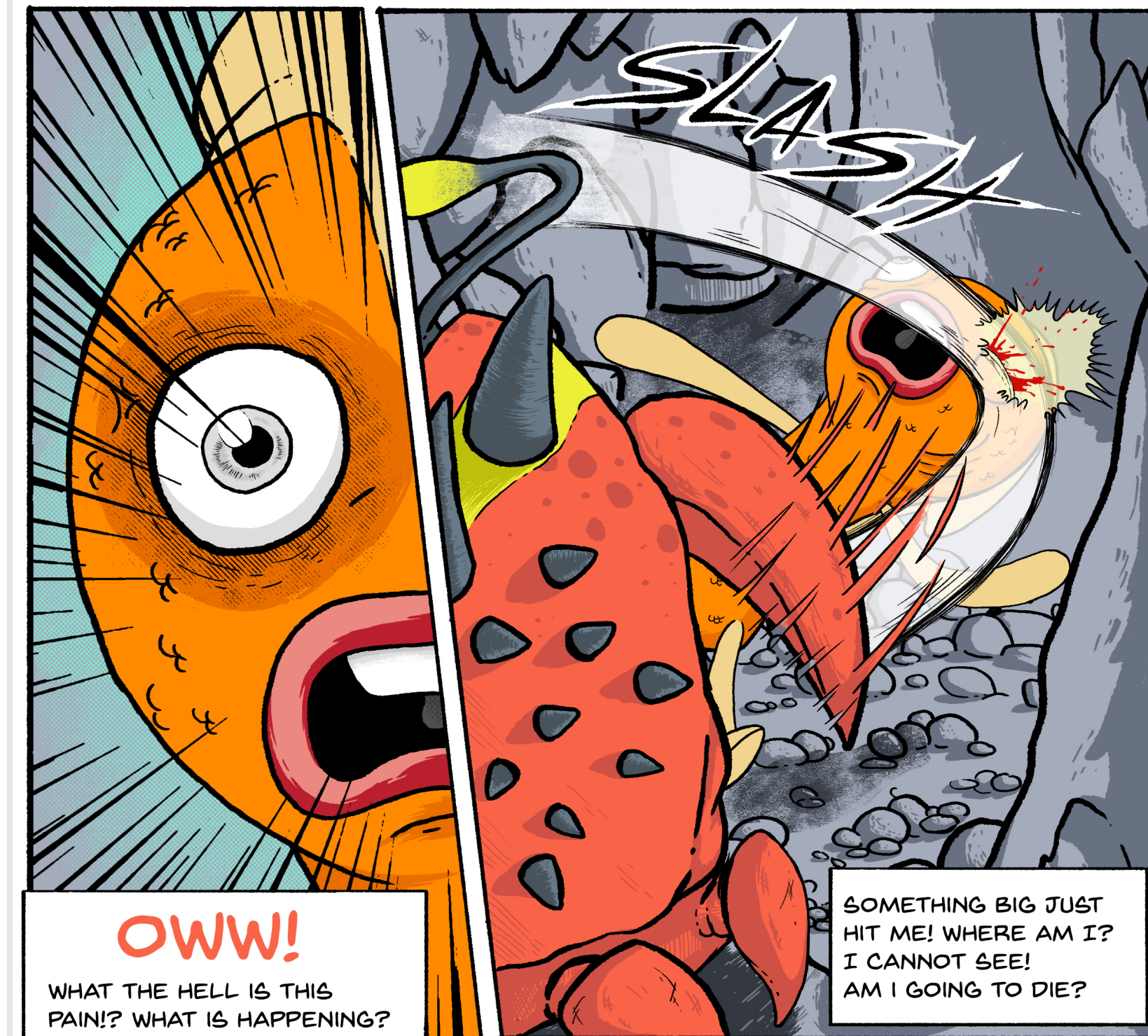
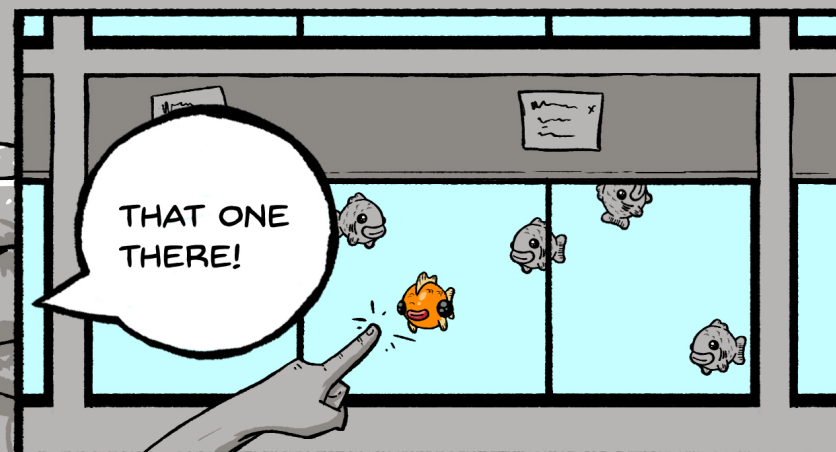
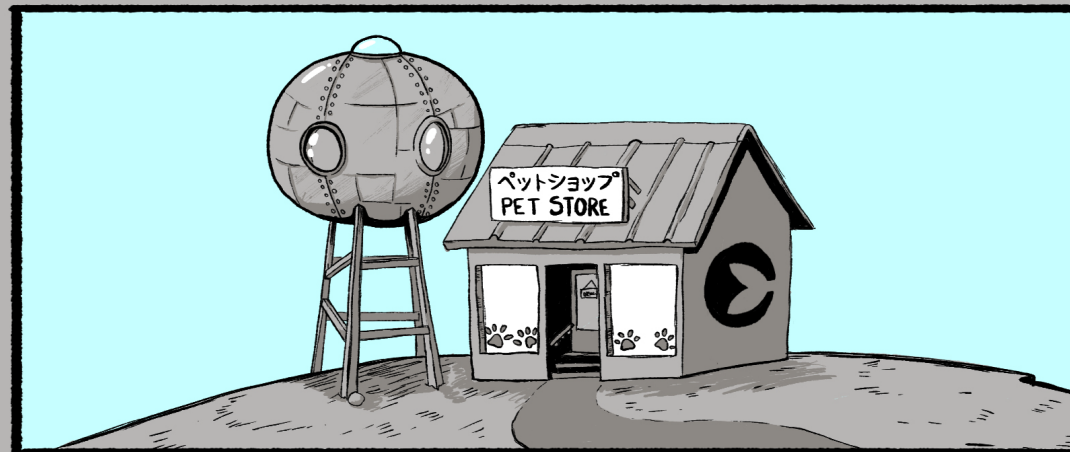
# FISHTALES

"Fishtales" represents a personal project that delves into the captivating adventure of Finn, a goldfish transported to another dimension. Within this extraordinary realm, Finn embarks on a journey of self-discovery, mastering kung-fu, and joining forces with allies to thwart an evil dictator's plans and save the ocean.

ALL STORIES START SOMEWHERE, MY STORY STARTS WITH HUMBLE BEGININGS.

THAT IN THE BAG, THAT'S ME, FINN... I STARTED MY LIFE AS ANY OTHER FISH, IN A PET STORE.

BUT THAT IS THE ONLY THING THAT I HAVE IN COMMON WITH THE REST OF THE FISH HERE.





## ME & MR

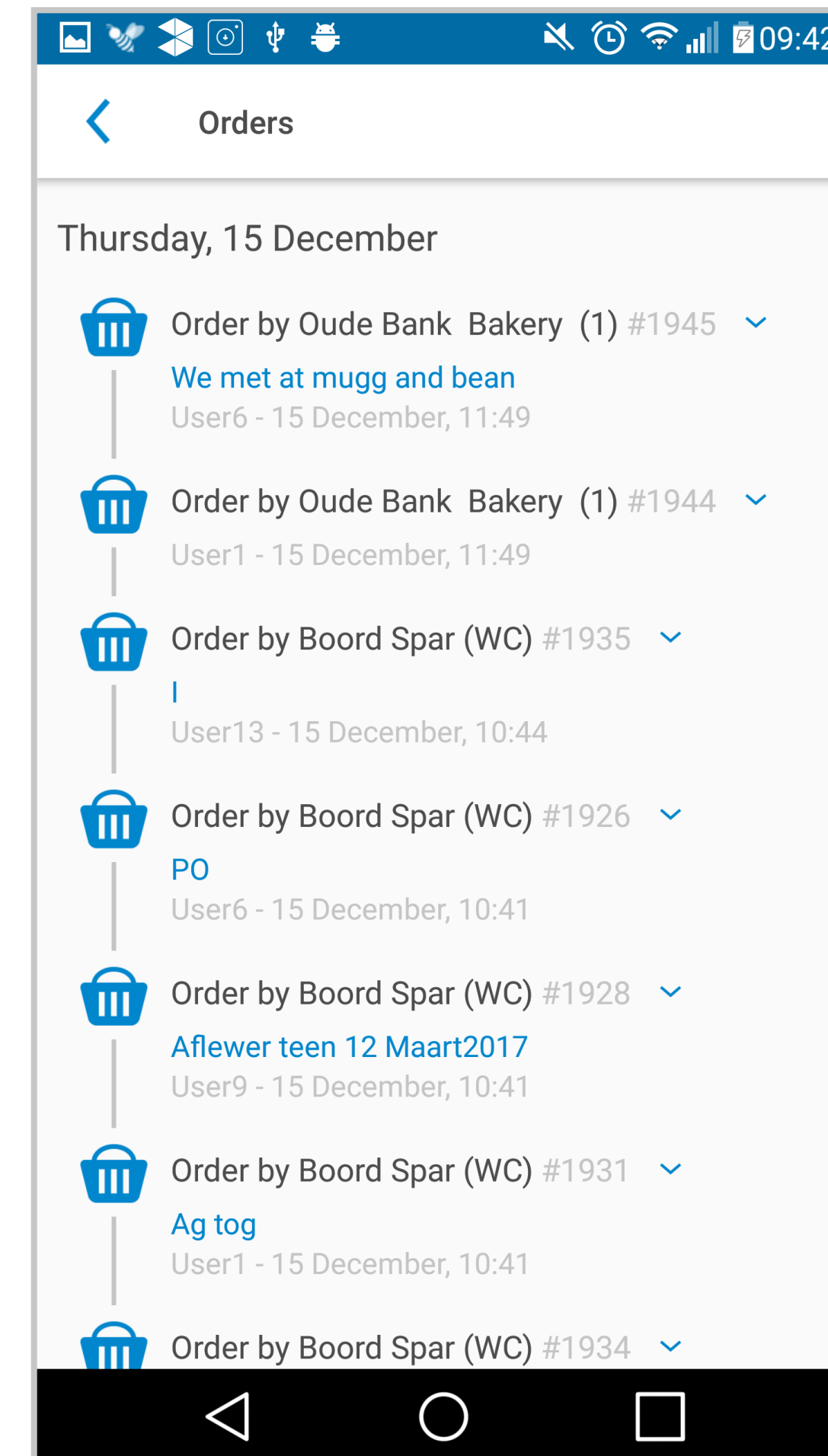
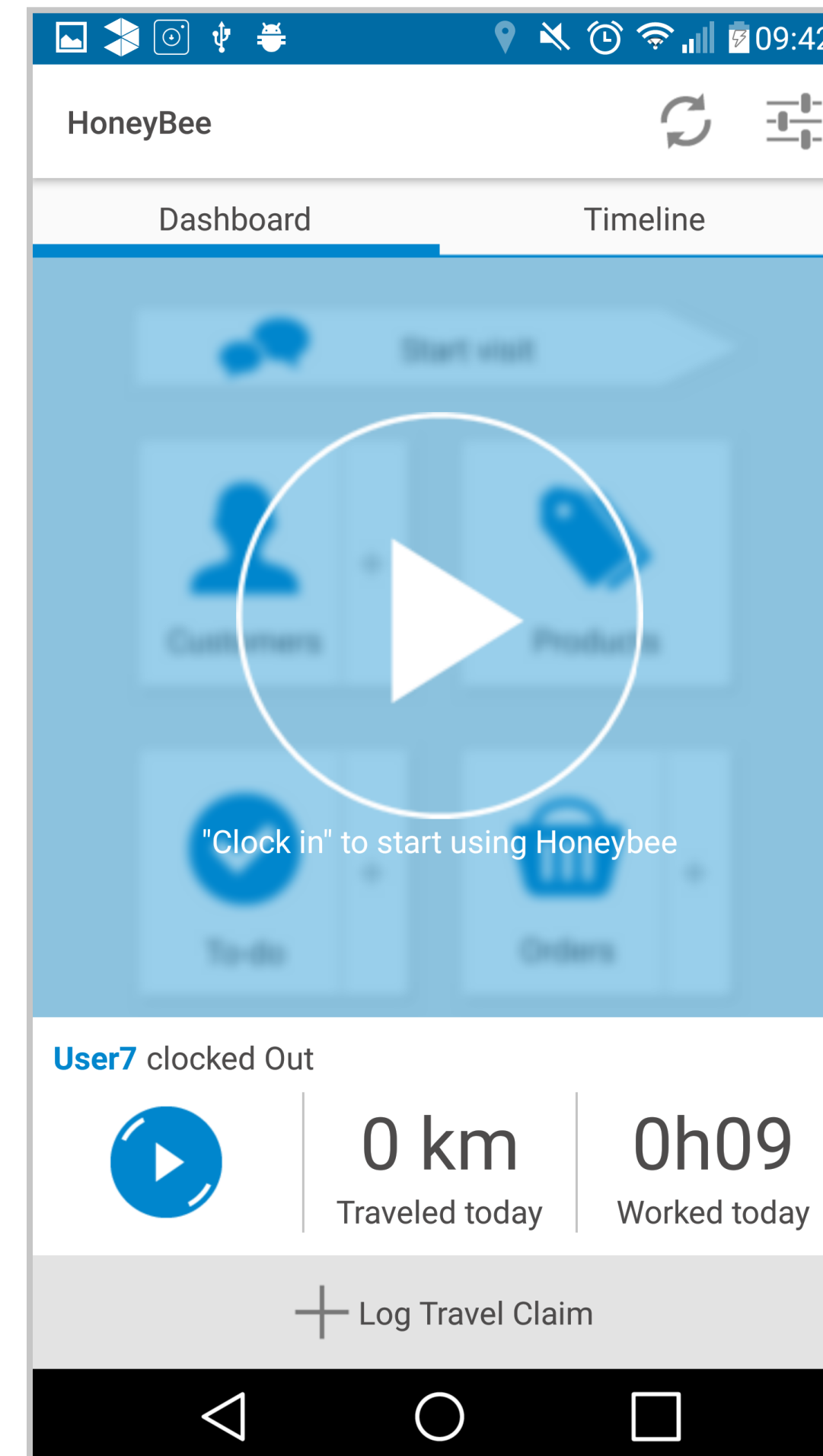
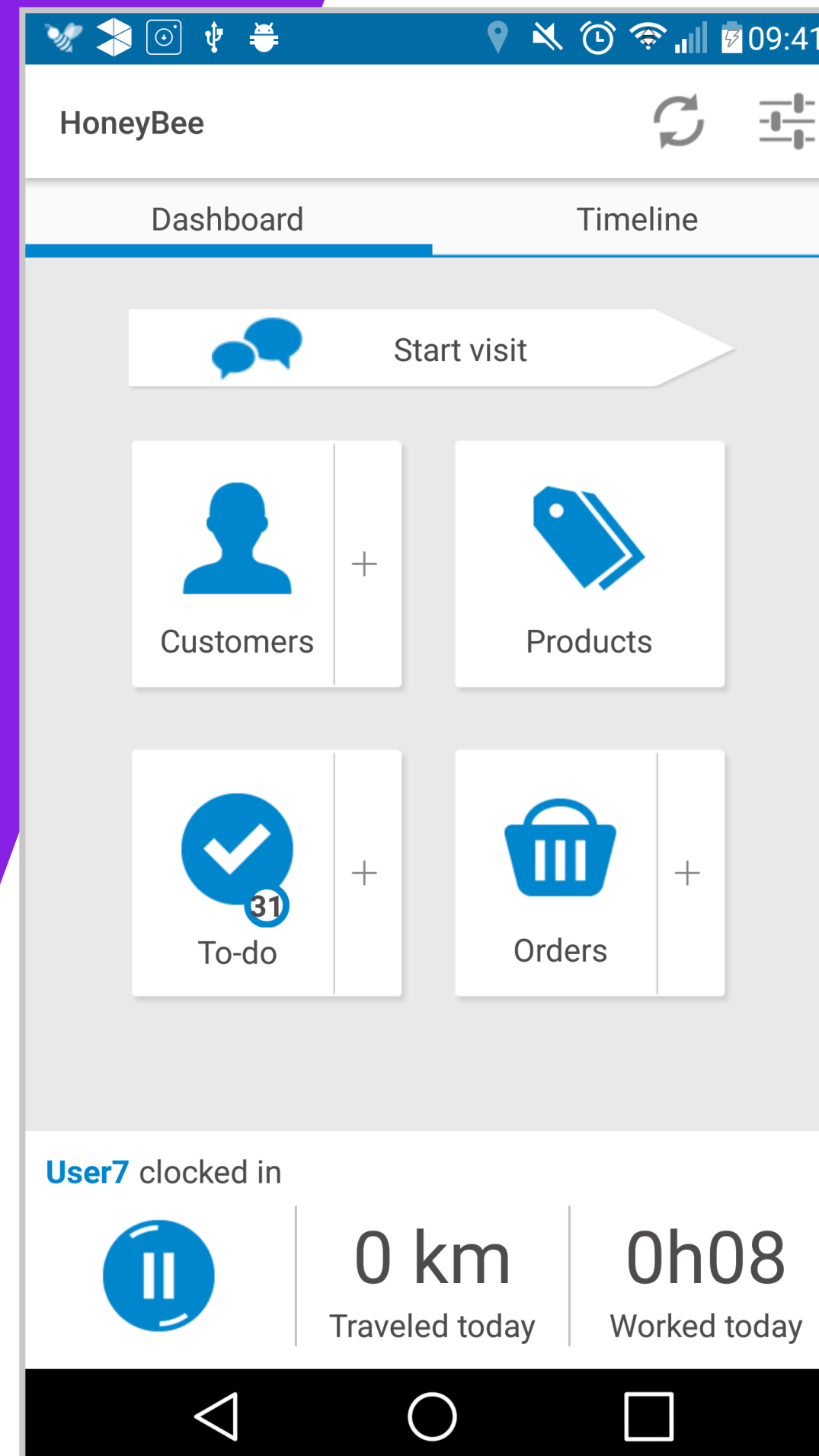
In this personal comic project, I delve into the enchanting world of a young yeti as he embarks on explorations through the wilderness. Alongside his trusty stick companion, Mr., he grapples with the challenges of solitude while witnessing humans revel in the beauty of their surroundings.

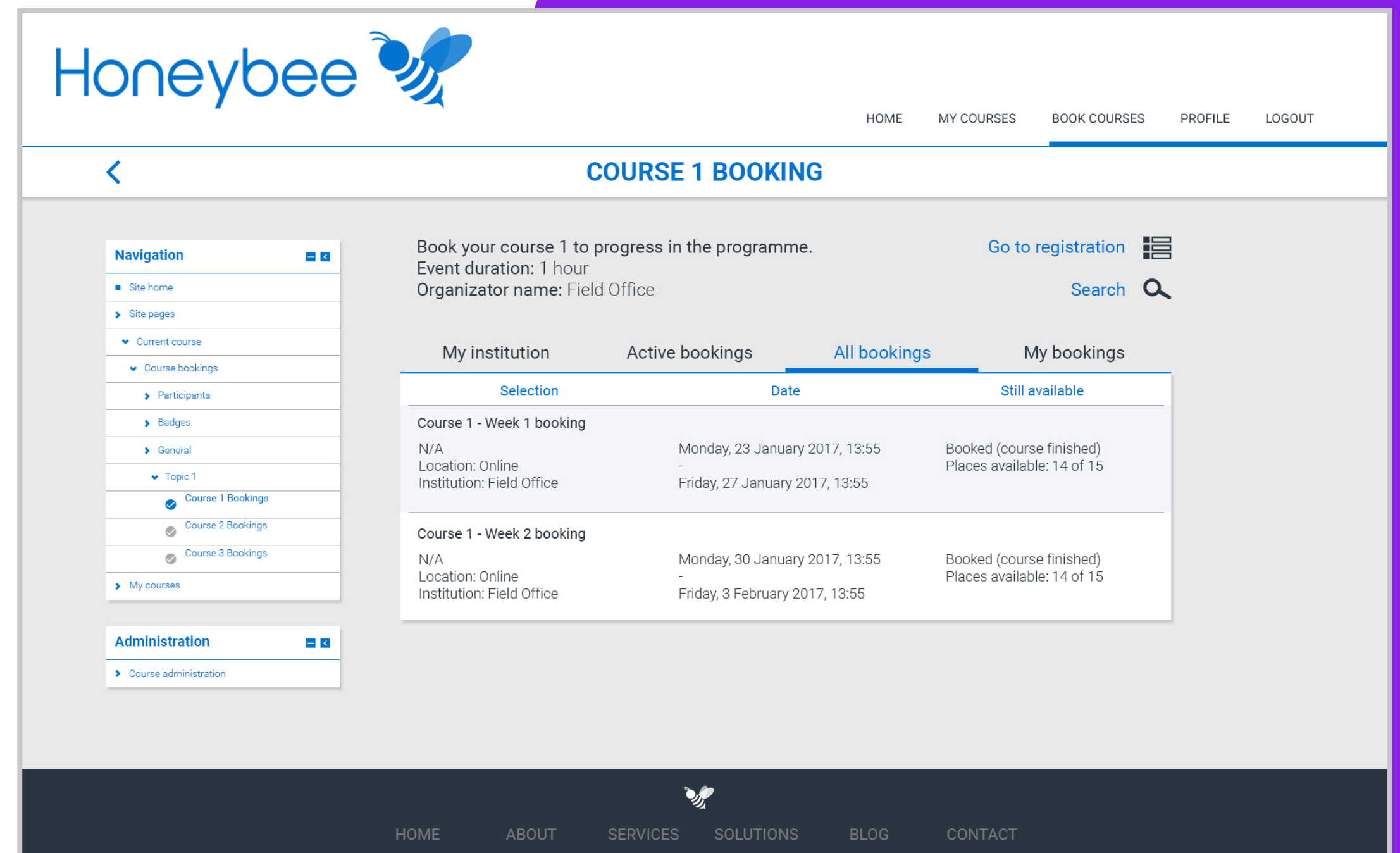
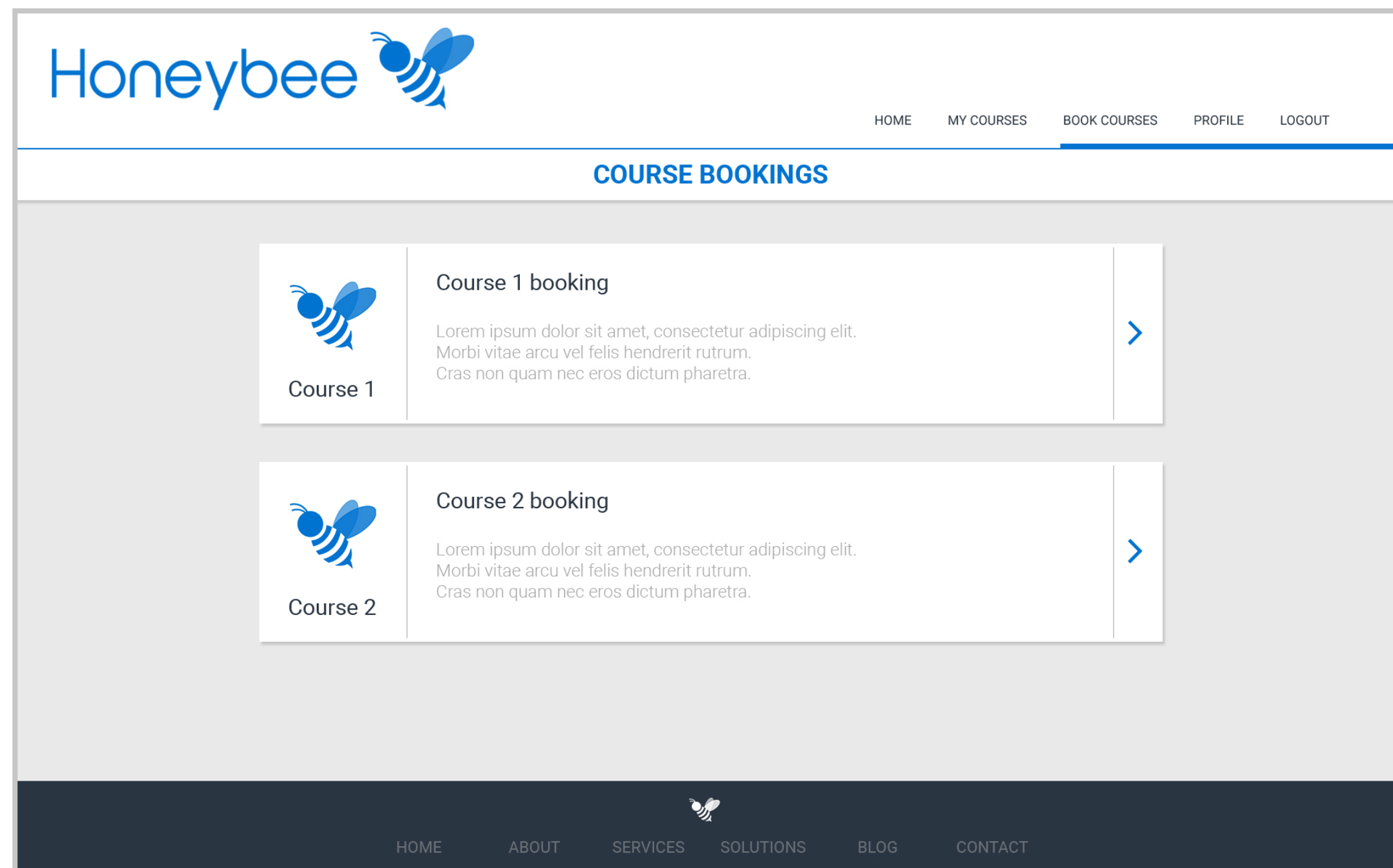


# **INTERFACE DESIGN**

# HONEYBEE

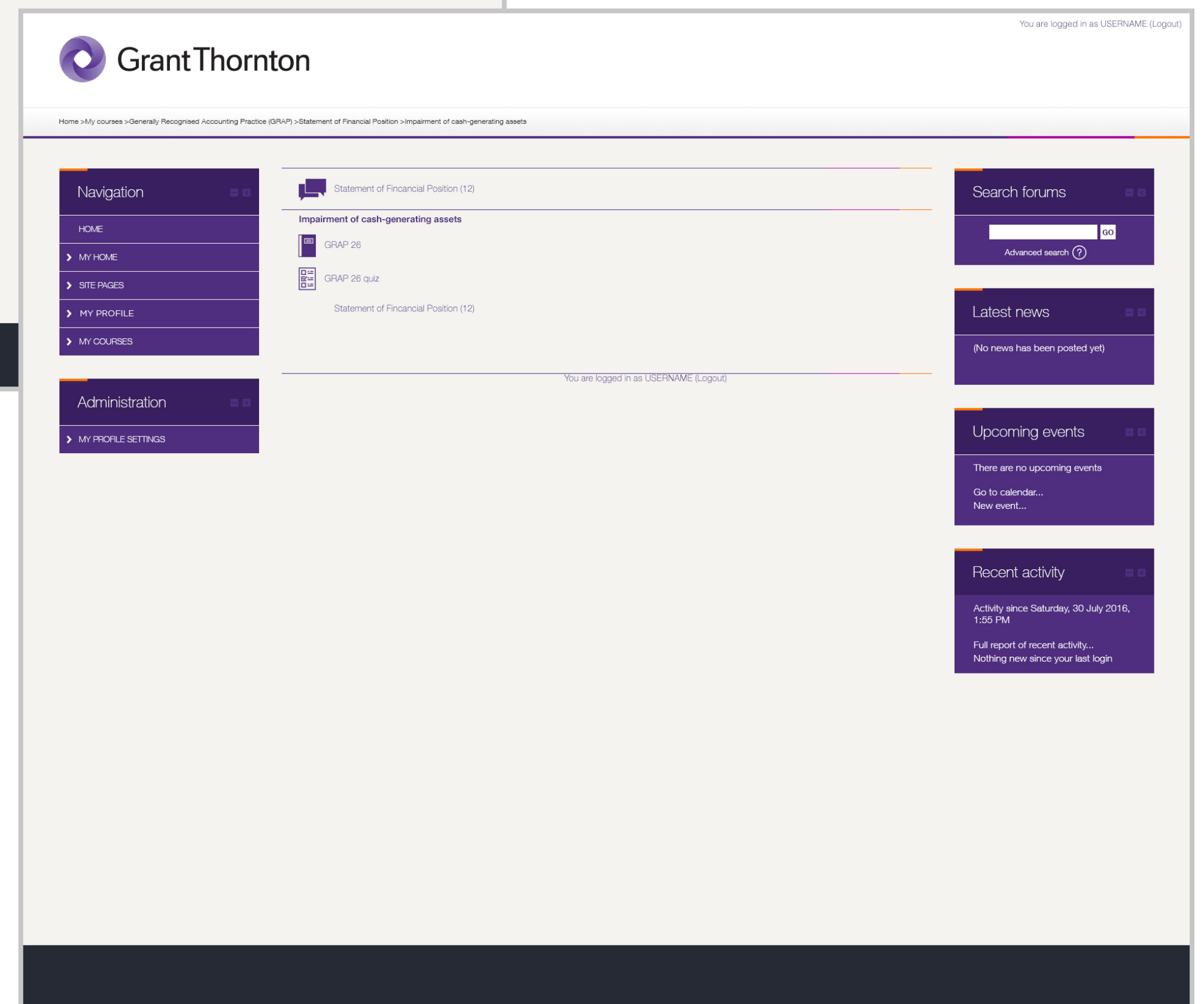
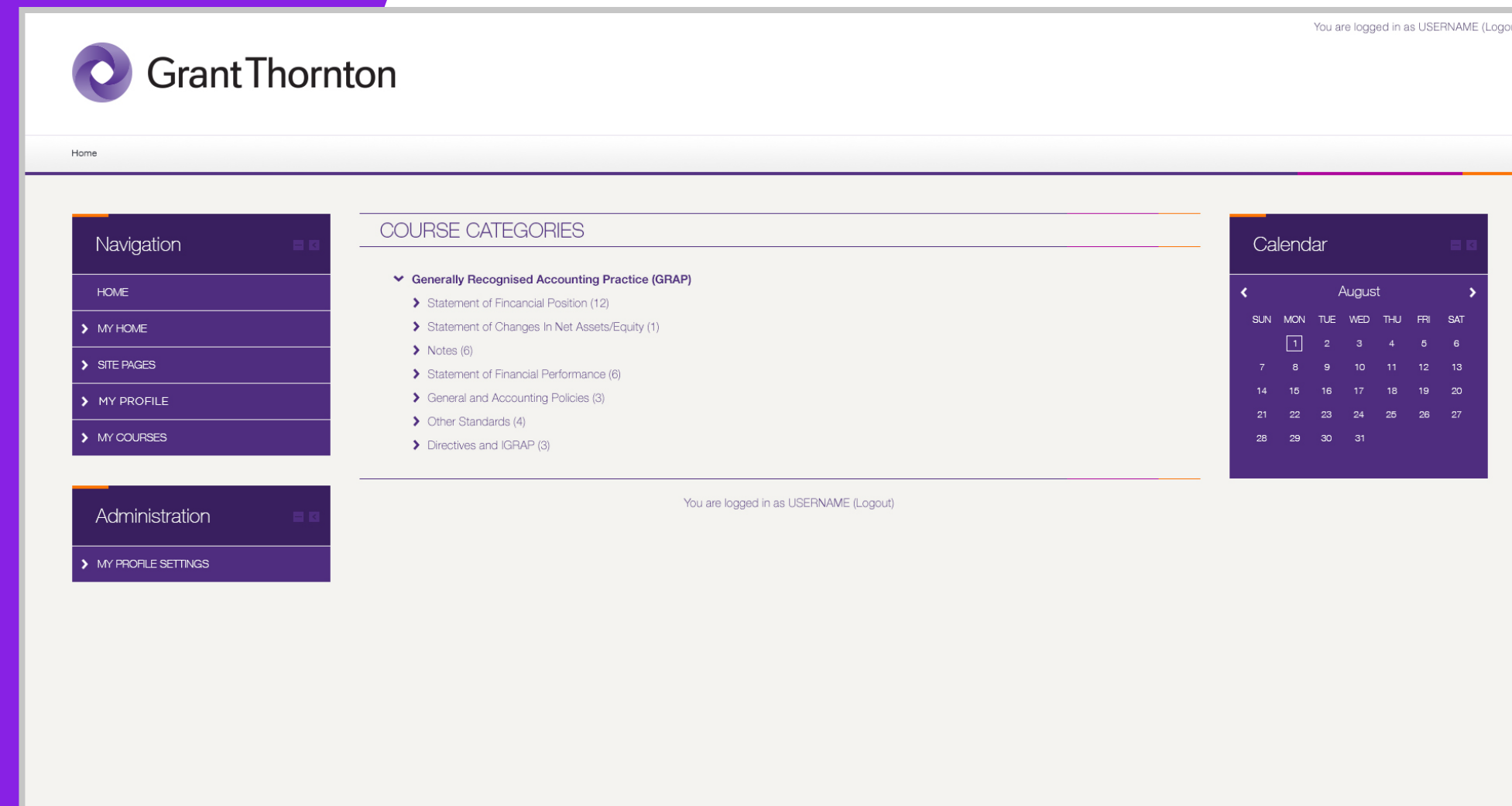
I had the opportunity to design the user interface for Honeybee's dual-platform system. The field app allowed staff to track honey sales on the go, while the learning platform supported team training and development. This project involved designing numerous interface screens and user interactions, each crafted to enhance usability and operational workflow.





# Grant Thornton

I had the opportunity to design the user interface for Grant Thornton's custom Learning Management System. Built on the Moodle platform, the LMS provided a tailored environment for staff training and development. This project involved designing multiple interface screens and user interactions, each crafted to align with brand identity and enhance the learning experience.



- Navigation
- HOME
- MY HOME
- SITE PAGES
- MY PROFILE
- MY COURSES
- COURSES
  - Generally Recognised Accounting Practice
    - Impairment of cash-generating assets
    - Financial Instruments
    - Leases
    - Impairment of non-cash-generating assets
    - Investment property
    - Heritage assets
    - Agriculture
    - Intangible assets
    - Borrowing cost
    - Inventories
    - Property, plant and equipment

COURSE CATEGORIES

Impairment of cash-generating assets
Financial Instruments
Leases
Impairment of non-cash-generating assets
Provisions, contingent liabilities and contingent assets
Investment property
Heritage assets
Agriculture
Intangible assets
Borrowing cost
Inventories
Property, plant and equipment

- Administration
- MY PROFILE SETTINGS

- Navigation
- HOME
- MY HOME
- SITE PAGES
- MY PROFILE
- MY COURSES
- COURSES
  - Generally Recognised Accounting Practice
    - Impairment of cash-generating assets
    - Financial Instruments
    - Leases
    - Impairment of non-cash-generating assets
    - Investment property
    - Heritage assets

**HEADING**  
Sub heading

Lorem ipsum dolor sit amet, consectetur adipiscing elit. Aliquam vitae fella cursus, pellentesque dolor et amet, pellentesque du. Nula in nunc at tellus gravida dignissim et nec fella. Vestibulum ut odio vel urna pharetra molestie non vitae velit. Phasellus tellus libero, condimentum sed magna eget, consectetur dictum urna. Cras varius est at libero pellentesque, ut tempus lectus aliquet. Fusce tempor enim magna, quis dignissim tellus condimentum ut. In quam massa, fingoia ut lacrima vel, congue venenatis lorem. Proin ullamcorper porta vestibulum. Etiam portitor at amet leo et sollicitudin. Nam euismod iugula ullamcorper dui ornare, vitae ornare velit aliquam. Duis augue nibh, volutpat sit amet pulvinar suscipit, ornare vitae orci. Nunc accumsan scelerisque congue. Vivamus vestibulum ullamcorper mi, at feugiat libero mattis eu.

Nam semper fermentum tempor. Vivamus mauris sem, viverra id ante eu, fermentum imperdiet sem.

Introduction

This document provides guidance on how an entity determines whether a cash-generating asset is impaired. Furthermore, it also provides guidance on the recognition, measurement and reversal of impairment losses.

For purposes of this guide, "entities" refer to the following bodies to which the standards of GRAP relate to, unless specifically stated otherwise:

- Public entities
- Constitutional institutions
- Municipalities and all other entities under their control
- Parliament and the provincial legislatures

**Click on the link below to open the document**

GRAP 26 ASB Impairment of Cash-generating Assets

- Administration
- MY PROFILE SETTINGS